



Pass2Cert.com
Your success is our guarantee

Your success is our guarantee

Dell EMC

D-PE-OE-01

Dell PowerEdge Operate v2 Exam

DEMO

v6.0 LATEST

Preview before you buy

Get Complete Exam Package

<https://pass2cert.com/exam/d-pe-oe-01>

Premium Features

Free Updates

90 days guarantee

Money Back

30-day policy

Instant Access

Download now

24/7 Support

Always here

Question 1. (Multi Select)

A technician needs to perform a RAID controller firmware update from within the Operating System. The server runs Red Hat Enterprise Linux and is configured with an iDRAC basic license.

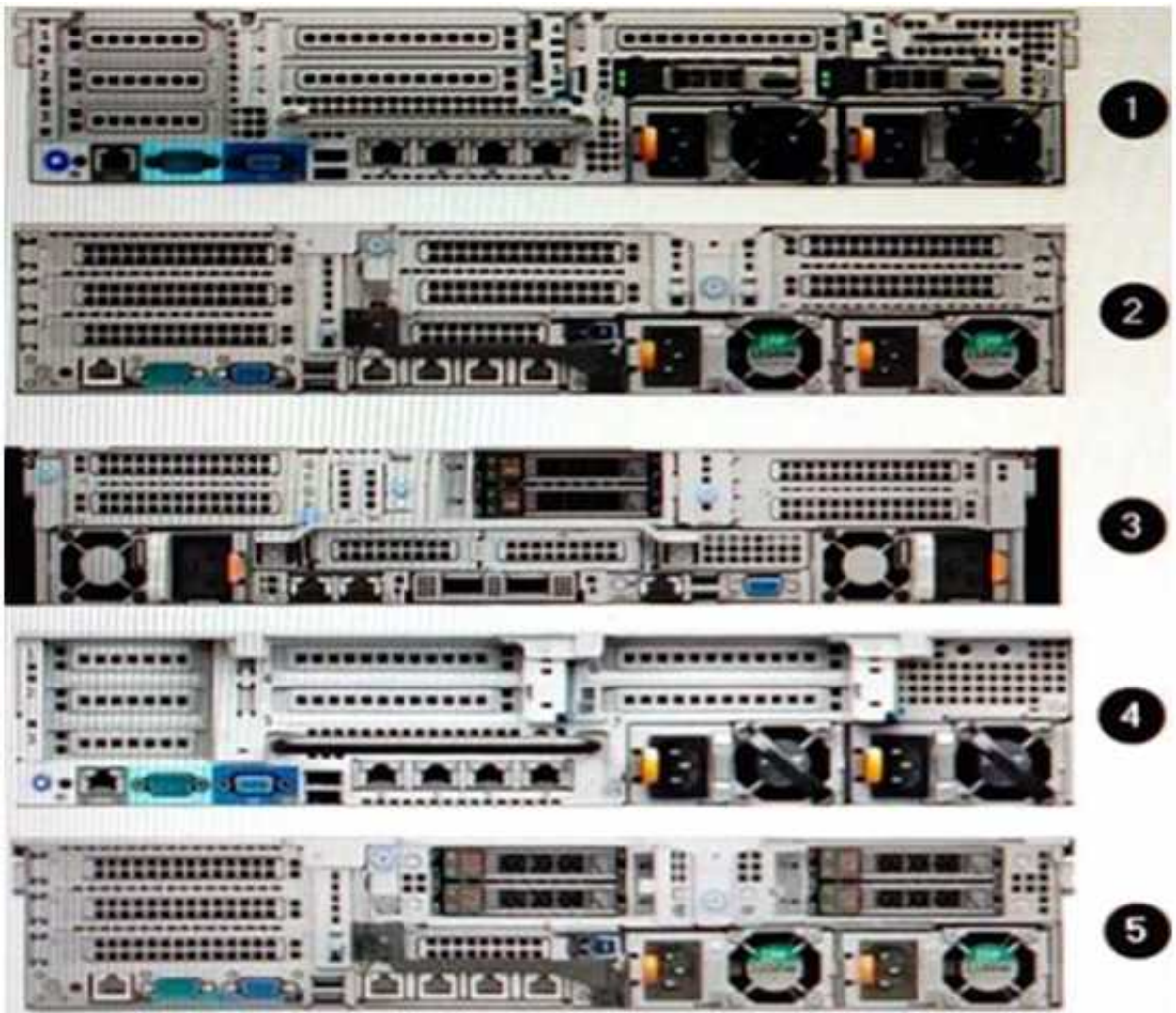
Which three steps should the technician take to complete this task?(Choose three.)

- A: Restart the server and press F10 to start the firmware update process
- B: After firmware update, run fsck command on the virtual disks
- C: Obtain the latest firmware update for the RAID controller
- D: Run racadm fwupdate command from a management station
- E: Open a command shell and execute the firmware package
- F: After the firmware update, restart the server

Answer: D, E, F

Question 2. (DRAGDROP)

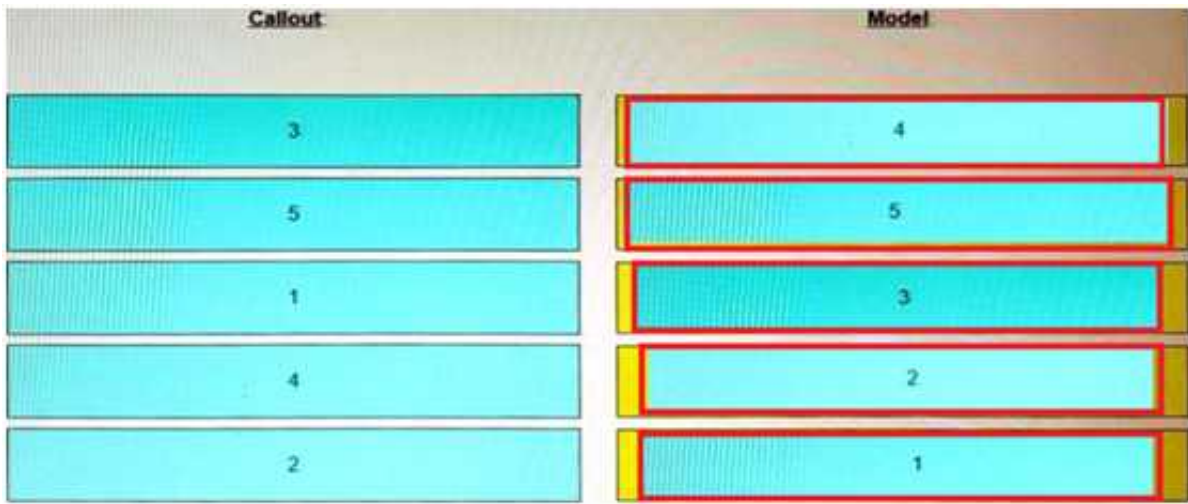
Refer to the exhibit.



Match each callout to the Dell EMC PowerEdge server model shown.

| Callout | Model |
|---------|--------|
| 3 | R730xd |
| 5 | R740 |
| 1 | R7525 |
| 4 | R730 |
| 2 | R740xd |

Answer:



Question 3. (Single Select)

A technician wants to remotely log in to a server but finds that the iDRAC virtual Console feature is not available. Use the simulator to explore the system.

What is the cause of this issue? Note: It is necessary to close (x) the simulator window before you can select a response to this question.





- A: The Virtual Console is disabled
- B: Operating system not installed on remote server
- C: The server has been powered down
- D: There are more than the maximum number of active sessions

Answer: C

Question 4. (Single Select)

A technician wants to configure the iDRAC on a new server using the iDRAC Quick Sync 2 feature. What is required to use this feature?

- A: OpenManage Mobile App installed on an Android or iOS device
- B: OpenManage Mobile App installed on a laptop
- C: Quick Sync enabled bezel
- D: iDRAC Enterprise license

Answer: A

Question 5. (Single Select)

Which is responsible for controlling the NVMe disks, when using a Paddle Card in a PowerEdge 15G server?

- A: S150
- B: HBA355

C: H745

Answer: A

Ready to Ace Your Exam?

Get instant access to the complete question bank

<https://pass2cert.com/exam/d-pe-oe-01>

Thank You for Choosing Pass2Cert!

Your success is our guarantee

Special Discount

Use promo code for instant savings

DISCOUNT15

SALES

sales@pass2cert.com

SUPPORT

support@pass2cert.com

