



HP

HPE7-A03 Exam

HPE Aruba Networking Certified Network Architect - Campus Access

Exam Latest Version: 6.1

DEMO Version

Full Version Features:

- 90 Days Free Updates
- 30 Days Money Back Guarantee
- Instant Download Once Purchased
- 24 Hours Live Chat Support

Full version is available at link below with affordable price.

<https://www.directcertify.com/hp/hpe7-a03>

Question 1. (DRAGDROP)

You hired a junior engineer to assist you with a large-scale network infrastructure project. The engineer has never worked on such a complex project 'ants to better understand the role that each role that each stakeholder will play in the project.

March the stakeholder title to the responsibilities that would most likely apply to their role.

Stakeholder Title	Answer Area	Responsibility
CISO		responsible for supporting, troubleshooting, and monitoring the wired/wireless infrastructure
Network Design/Architecture		responsible for investigating IDS/IPS incidents and managing firewalls
Network Operations		responsible for establishing security policy and selecting security controls for the infrastructure.
Security Operations		responsible for authoring the low-level design, and creating the configuration to meet the technical requirements.

Correct Answer:

Stakeholder Title	Answer Area	Responsibility
Network Operations		responsible for supporting, troubleshooting, and monitoring the wired/wireless infrastructure
Security Operations		responsible for investigating IDS/IPS incidents and managing firewalls
CISO		responsible for establishing security policy and selecting security controls for the infrastructure.
Network Design/Architecture		responsible for authoring the low-level design, and creating the configuration to meet the technical requirements.

Question 2. (ORDERLIST)

What should be Included in an Executive Summary? (Place the correct Items into the let at the right Order is no: Important Not all cottons win be used)

POSSIBLE INCLUSIONS	CORRECT INCLUSIONS
brief summary	
contact information	
high-level design	
job roles	
purpose of the document	
recommended cabling	
recommendations	
scope	
target audience	

A: Brief Summary

B: Contact Information
C: High-Level Design
D: job roles
E: Purpose of the Document
F: recommended cabling
G: Recommendations
H: Scope
I: Target Audience

Correct Answer: A, B, C, E, G, H, I

Question 3. (Multi Select)

A large multinational financial institution has contracted you to design a new full-stack wired and wireless network for their new 6-story regional office building. The bottom two floors of this facility will be retail space for a large banking branch. The upper floors will be carpeted office space for corporate users, each floor being approximately 100,000 sq ft (9290 sqm). Data centers are all off site and will be out of scope for this project. The customer is underserved by its existing L2-based network infrastructure and would like to take advantage of modern best practices in the new design. The network should be fully resilient and fault-tolerant, with dynamic segmentation at the edge.

The retail space will include public guest Wi-Fi access. Retail associates will have corporate tablets for customer service, and there will be a mix of wired and wireless devices throughout the retail floors. The corporate users will primarily use wireless for connectivity, but several wired clients, printers, and hard VoIP phones will be in use.

The customer is also planning on renovating the corporate office space in order to take advantage of 'smart office' technology. These improvements will drive blue-dot wayfinding, presence analytics, and other location-based services

The client has provided floorplans, wall density, and ceiling heights for the wireless deployment in the carpeted office space

What else will be needed to write an accurate bill of material? (Select two)

A: sprinkler details

- B: ceiling construction details
- C: PoE port details
- D: flooring information

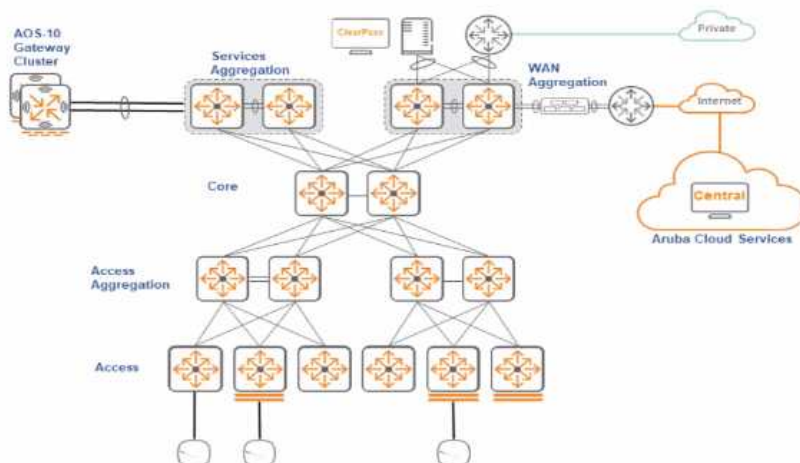
Correct Answer: B, C

Explanation:

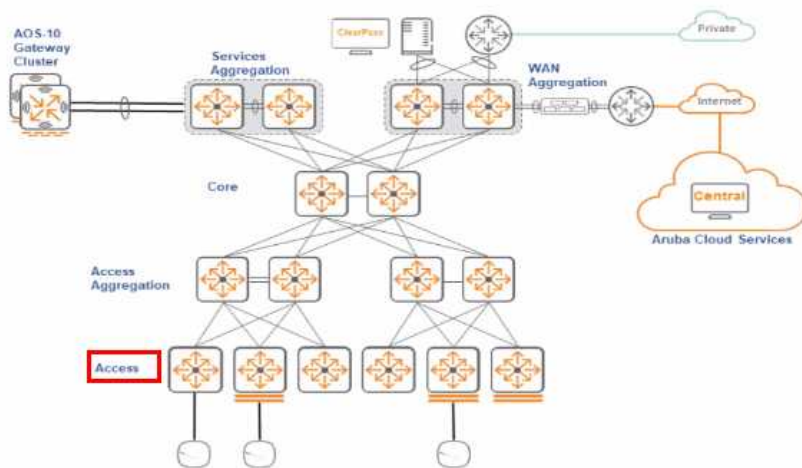
Ceiling construction details are essential for a wireless deployment because the material and structure of the ceiling can affect the propagation of wireless signals. Different materials can absorb or reflect RF signals differently, impacting coverage and signal strength. Understanding ceiling construction helps in planning the placement of access points for optimal coverage and performance. PoE (Power over Ethernet) port details are necessary to ensure that the wired network infrastructure can provide power to the access points and other PoE-enabled devices like VoIP phones and cameras. This information is critical for planning the power budget and ensuring that the network can support the power requirements of all connected devices, ensuring a stable and reliable network infrastructure.

Question 4. (HOTSPOT)

Based on this campus design, click on the layer that is the most appropriate to be designed as a Stub Persona, considering an EVPN VXLAN Fabric?



Correct Answer:



Question 5. (Single Select)

A customer wants to have the ability to show network usage. Which product would allow them to have this visibility?

- A: Central
- B: ClearPass
- C: UXI
- D: Aruba OS 8.X

Correct Answer: A

Explanation:

Aruba Central provides a cloud-based management platform for managing and monitoring Aruba Instant APs, switches, and branch gateways. It offers a comprehensive dashboard that gives insights into network usage, health, and performance metrics. Central allows network administrators to have visibility over their entire network infrastructure from a single pane of glass, including detailed usage statistics, which can be broken down by device, application, and time. This visibility into network usage is crucial for optimizing network performance, planning capacity, and understanding user behavior. Aruba Central's analytics and reporting capabilities enable customers to track and analyze network usage, making it the appropriate product choice for customers wanting to monitor their network usage closely.



Full version is available at link below with affordable price.

<https://www.directcertify.com/hp/hpe7-a03>

30% Discount Coupon Code: LimitedTime2025

*** 100% MONEY BACK GUARANTEED**
CERTIFICATION EXAMS
STUDY GUIDES

FREE TRIAL

*** Product Features**

- * 100% Success in the Final Exam
- * 90 Days Free Updates
- * Latest Exam Q/A
- * 24/7 Customer Support
- * Practice Exams

*** Free Demo for Practice Test & PDF**

50K Plus Satisfied Customers

VISA AMERICAN EXPRESS DISCOVER G Pay